



ATS1290

ATS Intelligent Addressable DGP

Product Overview

The ATS1290 Data Gathering Panel is an interface between the Advisor MASTER LAN-bus and an addressable bus, which has a GE Interlogix proprietary protocol. A maximum of up to 15 ATS1290 DGP's can be connected to the LAN.

This DGP is intended to be sitting on the LAN of any existing configuration of ATS products to expand the system with addressable devices. Especially in retrofit market the Intelligent Addressable system will have great benefit when existing cables need to be re-used.

A wide range of Intelligent Addressable devices can be connected to the bus:

- Internal I/O interface (build into existing detector)
- External I/O interface for connecting external detectors
- PIR AM detector
- Smoke detectors
- Etc.

Intelligent Addressable Bus Topology

In principle the bus-topology is free although there will be a different maximum cable specification for each kind of topology.

Examples of different bus topologies:

- Lumped (all Intelligent Addressable devices at the end)
- Distributed (all Intelligent Addressable devices distributed across the line)
- Star (all Intelligent Addressable devices with own branches to a star point)
- Remote DGP (A DGP positioned remote from a power-supply)

In practice there will be a mix of topologies.



Standard Features

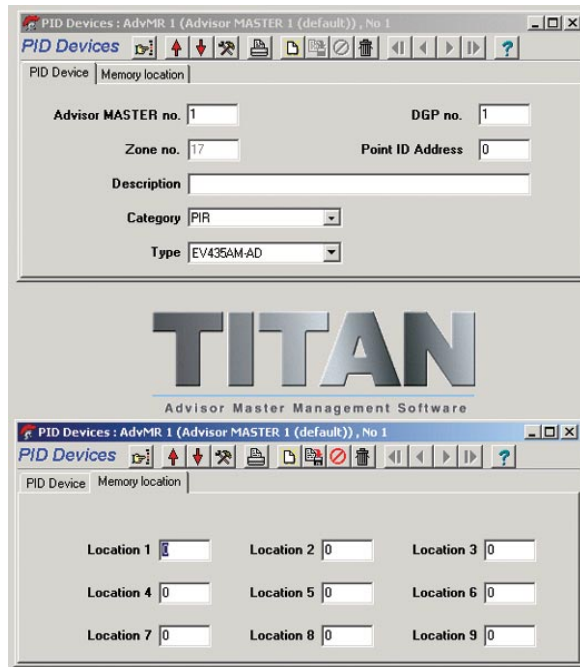
- Unique 2/4-wire addressable detector system
- Free bus-topology
- Easy installation by reduced wiring connections
- Existing cables can be re-used in retrofit installation
- The options/settings of a detector available via programming
- Future commissioning reports will include i.e. detect sensitivity settings
- 16 or 32 detectors configurable
- 16 or 32 outputs of functionalities programmable
- Up to 15 ATS1290 DGP's can be connected to the LAN

ATS1290

ATS Intelligent Addressable DGP

Specifications

Power supply (CON1)	10.5 - 13.8 Vdc
Supply Current (at 13.8 Vdc ± 5%)	53mA (no device connected)
Power supply (CON2)	9.9 - 13.2Vdc
Max output current	154mA (at 13.2Vdc ± 5%)
Max unit load	512
Dimensions	80 mm x 90 mm (PCB only)
Weight	160 gr.
Temperature	10°C to +50°C
Relative humidity	95 %



Ordering Information

Part No.	Description
ATS1290	ATS Intelligent Addressable DGP
AD111	Internal "addressable security system" interface, one input, one output
AD011	External "addressable security system" interface, one input, one output
AD044	External "addressable security system" interface, four input, four output
EV435AM-AD	Antimask addressable motion sensor
EV435-AD	Addressable motion sensor
DD205-AD	Addressable, range controlled dual motion sensor

ATS1290 Features

The DGP provides two-wire bi-directional communications with up to 32 individually addressed IADS-devices and a maximum of 32 outputs (or functionalities) can be configured.

Easy control can be given to the addressable detectors.

No additional wires are required anymore for i.e. an anti mask detector for walk test, led control, anti-mask, etc. The options/settings of a detector are available via the built-in menu structure or TITAN.

The ATS1290 does not have a power supply and shall be powered either directly by a host panel like the ATS20xx/30xx/40xx/45xx, ATS1201 or by means of an auxiliary power supply unit.

The addressable bus is capable of powering low current detectors with Internal Interface or integrated bus interface (EV125 / 425). For high current devices / detectors the related component sheet needs to be consulted.

Learn Mode

The ATS1290 is provided with a learn mode.

This learn mode can be initiated on the DGP for recognising the new devices on the bus before the devices will be able to transfer status information or can be configured by the Intelligent Addressable DGP.

Security Aspects

Any removal or loss of a bus device will trigger a tamper alarm. Shortening or cutting the bus will trigger a tamper alarm as well. Any address conflict (double addressing) will be identified during installation.

